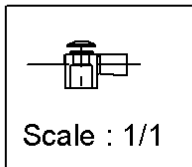
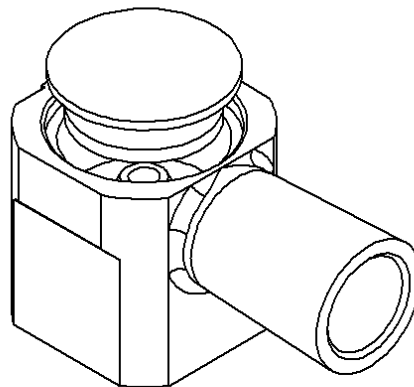
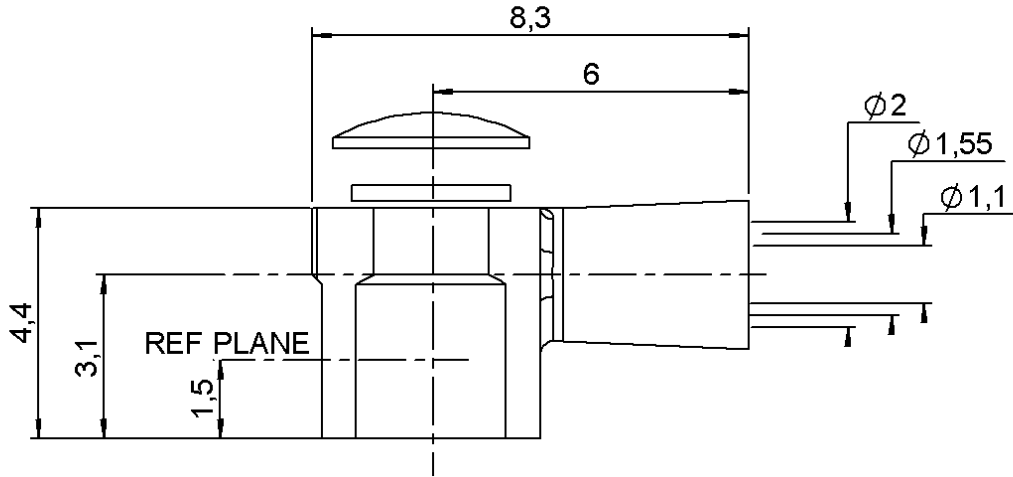


RIGHT ANGLE PLUG CRIMP TYPE

R209.353.002

CABLE 2/50+75 S

Series : MMS



All dimensions are in mm.



| COMPONENTS | MATERIALS | PLATING (µm) |
|----------------|------------|------------------------|
| BODY | ZINC ALLOY | NICKEL 2 |
| CENTER CONTACT | BRASS | GOLD 0.8 OVER NICKEL 2 |
| OUTER CONTACT | - | - |
| INSULATOR | PTFE | - |
| GASKET | - | - |
| OTHERS PARTS | - | - |
| - | - | - |
| - | - | - |

Issue : 0704 D

In the effort to improve our products, we reserve the right to make changes judged to be necessary.



RIGHT ANGLE PLUG CRIMP TYPE

R209.353.002

CABLE 2/50+75 S

Series : MMS

PACKAGING

| Standard | Unit | Other |
|-------------|-------------------|-------------------|
| 1000 | 'W' option | Contact us |

SPECIFICATION

ELECTRICAL CHARACTERISTICS

| | | |
|---------------------------------|-----|-----------------------------|
| Impedance | | 50 Ω |
| Frequency | | 2-6 GHz |
| VSWR | * + | 0,0000 x F(GHz) Maxi |
| Insertion loss | | 0.2 √F(GHz) dB Maxi |
| RF leakage | - (| NA - F(GHz)) dB Maxi |
| Voltage rating | | 50 Veff Maxi |
| Dielectric withstanding voltage | | 250 Veff mini |
| Insulation resistance | | 500 MΩ mini |

CABLE ASSEMBLY

| Stripping | a | b | c | d | e | f |
|-----------|------|------|------|------|------|------|
| mm | 2,00 | 1,00 | 0,00 | 0,00 | 3,80 | 0,00 |

Assembly instruction :

Recommended cable(s)

RG 178
 RG 196
 RG 178 LC
 PK-75-1-11
 KX 21
 288499 FTX (ind 6)

Characteristics indicated on this data sheet are those that can be achieved with the highest performance cable. Intrinsic limitations of the cable may diminish the performance of the assembly

Cable retention

- pull off **20** N mini
 - torque **NA** N.cm

MECHANICAL CHARACTERISTICS

| | | |
|----------------------------|-----------|-----------|
| Center contact retention | | |
| Axial force – Mating end | 8 | N mini |
| Axial force – Opposite end | 8 | N mini |
| Torque | NA | N.cm mini |

| | | |
|--------------------|---------------|------|
| Recommended torque | | |
| Mating | NA | N.cm |
| Panel nut | NA | N.cm |
| Clamp nut | NA | N.cm |
| A/F clamp nut | 0,0000 | mm |

| | | |
|-------------|---------------|-------------|
| Mating life | 50 | Cycles mini |
| Weight | 0,3570 | g |

TOOLING

| Part Number | Description | Hexagon |
|-------------|-------------|---------|
| . | . | . |

OTHER CHARACTERISTICS

*50 Ohms:1.2 à 2GHz, 75 Ohms:1.2 à 1Ghz

ENVIRONMENTAL

| | | |
|-----------------------|----------------|-----------|
| Operating temperature | -40/+90 | ° C |
| Hermetic seal | NA | Atm.cm3/s |
| Panel leakage | NA | |

Issue : 0704 D

In the effort to improve our products, we reserve the right to make changes judged to be necessary.



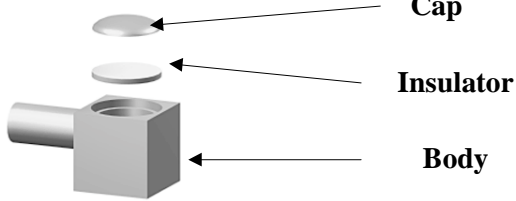
RIGHT ANGLE PLUG CRIMP TYPE

R209.353.002

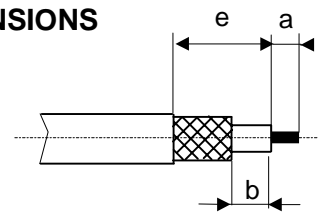
CABLE 2/50+75 S

Series : MMS

COMPONENTS



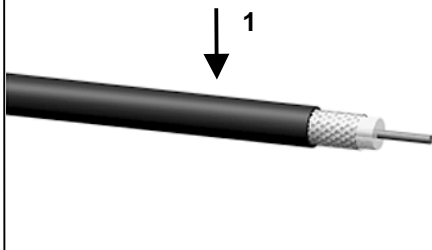
STRIPPING DIMENSIONS



« Procedure interne. Seuls les connecteurs câblés par RADIALL sont garantis. »
 « Internal procedure. Only plugs assembled by RADIALL are under guarantee »

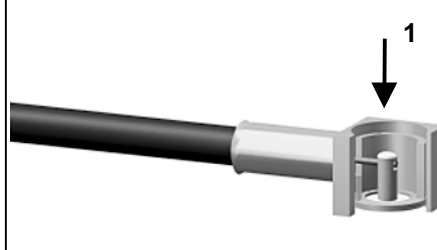
1

Strip the cable.



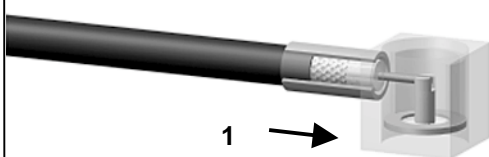
4

Solder the inner conductor.



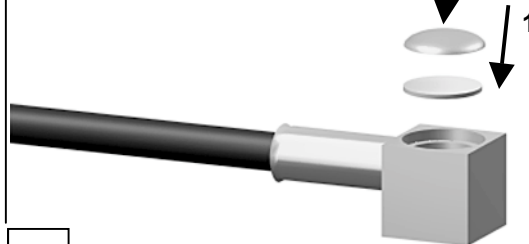
2

Introduce the cable into the body until contact with the body shoulder.



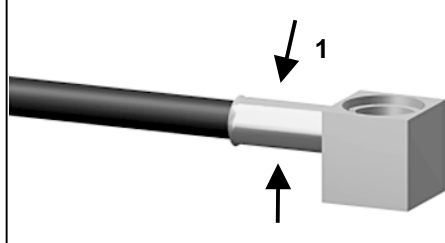
5

Place the insulator into the body. Place the cap into the body.



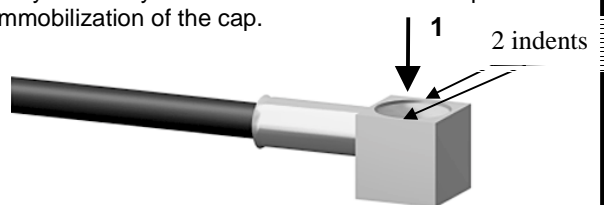
3

Crimp the body on the cable.



6

Press on the cap flush or slightly below the surface of the body assembly and make two indents to complete immobilization of the cap.



Issue : 0704 D

In the effort to improve our products, we reserve the right to make changes judged to be necessary.

